



# poverty in the district

## what is poverty?

Nearly 20 percent of District residents live in poverty. In other words, 110,000 District families earn less than \$22,314. That is an alarming number of poor residents, but it's not the full picture.

Of great concern is the large number of struggling individuals who are not captured among the poor, even though their incomes are dangerously close to the official poverty level. These low-income workers, who are struggling to make ends meet, face many of the same economic risks and challenges as those who are officially poor.

### what is poverty?

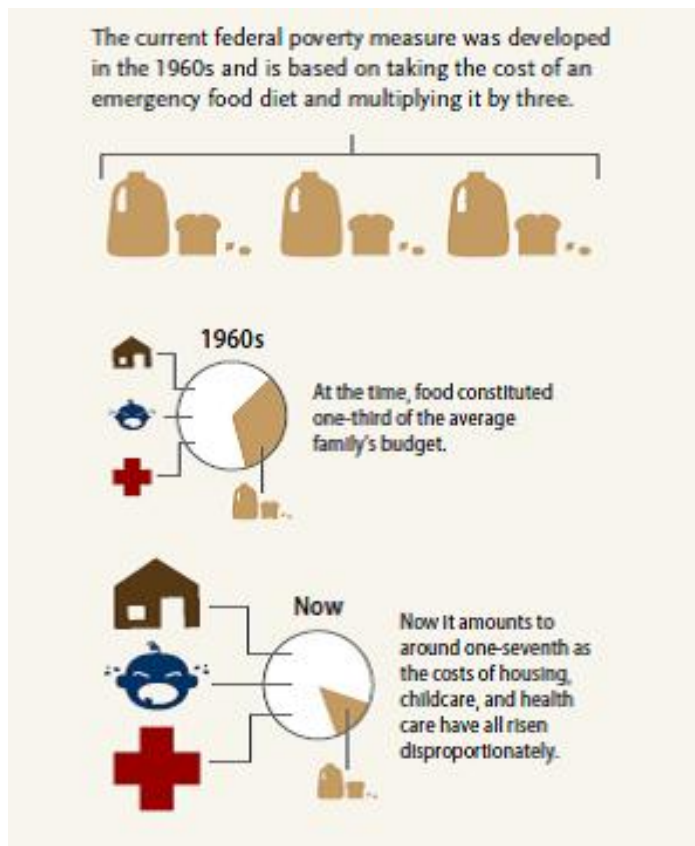
**The federal poverty line is \$22,314 for a family of four.**

- 57 percent of low-income residents live in a family in which at least one adult works.

**19.2% or nearly 110,000 District residents** live in poverty.

**The FACTS:**

- **30% of District children**, ages 5-17, live in poverty.
- **13% of District adults**, aged 18-64, live in poverty.
- **Almost 10% of District seniors**, age 65 and older, live in poverty
- **More than two in five District households with children** reported that they did not have enough money to buy food at some point during 2008 and 2009.



### low-income = less than 150 % of poverty

- Nearly one quarter of DC's population had incomes at or below 150 percent of the federal poverty line, or \$24,475, in 2006-2007.
- Almost half of District residents in single-parent families have incomes below 150 percent of poverty.
- One third of children and Black residents have incomes at or below 150 percent of poverty.
- Close to half of DC residents without a high school diploma are below 150 percent of poverty. However, 1 in 3 of District residents with a high school diploma also has low incomes.

### deep poverty = less than 75 % of poverty

- 1 in 4 DC residents lived in deep poverty in 2006-2007.
- Nearly 50% of DC residents in single-parent families live in deep poverty.
- 1 in 3 children in DC live in deep poverty.
- 1 in 3 African Americans District residents live in deep poverty.